

## i-CERA~DUR: a smart connected membrane

### WHAT IS IT?

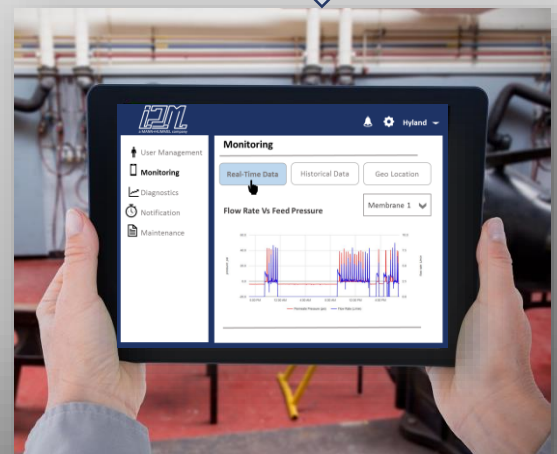
- i-CERA~DUR is a smart connected membrane module with sensors integrated into the housing design
- i-CERA~DUR monitors membrane performance and other parameters about your unique operating conditions

### HOW DOES IT WORK?


- Flow, pressure, and turbidity sensors are integrated to monitor the performance and quality of the clean water
- The membrane module is connected via cellular network and relays testing data to the cloud remotely
- Current and historical filtration performance of each membrane is displayed on your smartphone through the IoT platform

### WHAT ARE THE BENEFITS?

- Lower operational expenses by optimizing cleaning cycles and reducing maintenance
- Access historical data to maximize system output
- Receive notifications when system is not operating at optimal conditions and take rapid action
- Monitor individual membrane performance and eliminate the need for additional analytical equipment in the skid and reduce shutdown time



## i2m App: Monitoring Real-time data



a MANN+HUMMEL company

Notification icon | Settings icon | Hyland

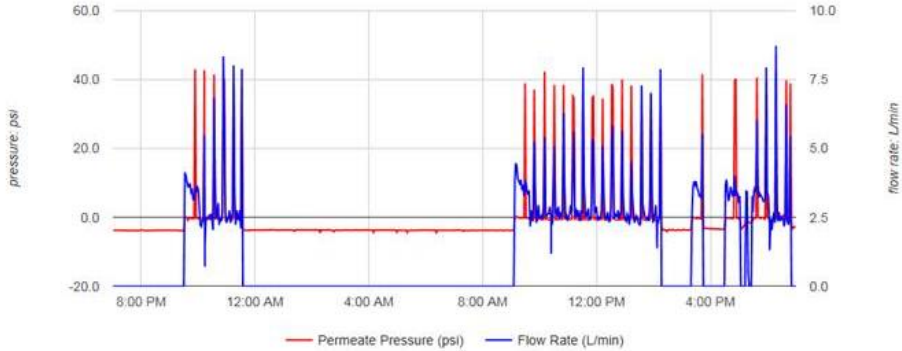
- User Management
- Monitoring**
- Diagnostics
- Notification
- Maintenance

### Monitoring

Real-Time Data | Historical Data | Geo Location

Membrane 1

#### ➤ Flow rate and Pressure with time



— Permeate Pressure (psi) — Flow Rate (L/min)

**i-CERA~DUR: smart connected membrane to monitor and improve performance remotely.**

**i2m is offering a unique opportunity for a limited number of top customers to participate in a pilot program.**