



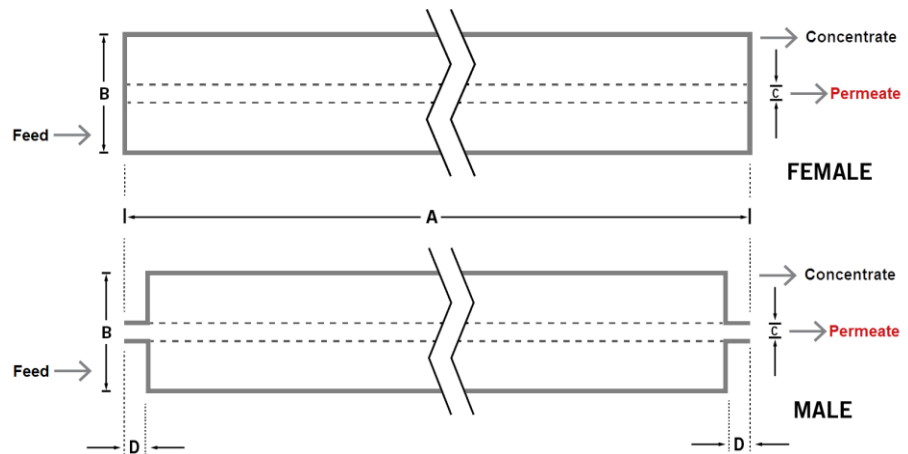
MICRODYN RO

High Rejection Brackish Water RO Elements

The MICRODYN RO series of brackish water RO membranes is ideal for water purification applications. These elements feature our best membrane for directly replacing competitive RO products and offer very high solute rejection. MICRODYN RO elements are available in standard 4" and 8" spiral-wound designs to meet all of your new equipment and direct replacement needs.

MEMBRANE CHARACTERISTICS	Membrane Chemistry	Thin-Film Composite Polyamide	
	Construction	Spiral-Wound Membrane Element with Fiberglass Outerwrap	
	Stabilized Salt Rejection (%)	99.5	
	Minimum Salt Rejection (%)	99.0	
ELEMENT SPECIFICATIONS	Model	MICRODYN RO 4040-BW	MICRODYN RO 8040-BW-400
	Permeate Flow – m³/d (GPD)^a	9.1 (2,400)	40.5 (10,700)
	Membrane Area – m² (ft²)^b	7.9 (85)	37.2 (400)

PHYSICAL DIMENSIONS



Model	MICRODYN RO 4040-BW	MICRODYN RO 8040-BW-400
Dim. A – mm (inches)	1,016 (40.0)	1,016 (40.0)
Dim. B – mm (inches)	99 (3.9)	201 (7.9)
Dim. C – mm (inches)^c	19.1 (0.75)	28.6 (1.125)
Permeate Tube^d	Male	Female
Element Weight – kg (lb)^e	4 (9)	16 (36)

^a Test conditions: 2,000 ppm NaCl, 15.5 bar (225 psi), 25°C (77°F), 15% recovery, pH 8.0, 30 minutes operation. Flow rates will be no more than 15% below the values shown. Product specifications may change without notice as design revisions occur.

^b All models on this sheet have fiberglass outer wrap and diamond shaped feed spacers.

^c Diameters for Dimension "C" are as follows. For Female elements, "C" is the Inner Diameter. For Male elements, "C" is the Outer Diameter.

^d Male elements have a protruding permeate tube, indicated as "D" in the diagram. Dimension "D" is 1.0 in (25.4 mm).

^e Shipping weight is dependent on packaging material and quantity shipped.

OPERATING PARAMETERS

Maximum Operating Pressure	41 bar (600 psi)
Maximum Operating Temperature	45°C (113°F)
Cleaning pH Range¹	1.0 – 12.0
Chlorine Tolerance²	< 0.1 ppm
Maximum Pressure Drop	1 bar (15 psi) per element 4 bar (60 psi) per housing
Maximum SDI₁₅	5.0
Maximum Turbidity	1.0 NTU

IMPORTANT INFORMATION

Start-up:	MICRODYN-NADIR recommends flushing elements for 30 minutes at low pressure and discarding permeate during the flush prior to operation. For a more detailed start-up procedure, please see <i>Element Start-Up Guide – System Start-Up</i> (TSG-O-005).
Cleaning:	MICRODYN RO membrane elements must be cleaned periodically to ensure proper operation and to prevent membrane damage. Please see <i>Membrane Cleaning Guide – Water Application Elements</i> (TSG-C-001).
Storage:	MICRODYN RO membrane elements must be stored appropriately to ensure proper operation and to prevent membrane damage. Please see <i>Element Storage Guides</i> (TSG-O-009 & TSG-O-010).

¹ Refer to temperature and pH limits in *Membrane Cleaning Guide - Water Application Elements* (TSG-C-001).

² Pretreatment is recommended for the removal of free chlorine and other oxidizing agents to prevent damage to membranes. Oxidizing agents, such as free chlorine, in contact with polyamide membranes may result in shortened operating life or membrane failure. Such oxidation damage is excluded from warranty. Refer to *Membrane Operating Guide - Recommendations for Water Purification* (TSG-O-012).



Headquarters
MICRODYN-NADIR GmbH
Building D512
Kasteler Straße 45
65203 Wiesbaden
Germany
info@microdyn-nadir.de
www.microdyn-nadir.de

USA Office
MICRODYN-NADIR US, Inc.
93 South La Patera Lane
Goleta, CA 93117
USA
info@microdyn-nadir.com
www.microdyn-nadir.com/en
www.microdyn-nadir.com/triseip

China Office
MICRODYN-NADIR (Xiamen) Co. Ltd.
No. 66 Jinting North Road Xinglin
Xiamen, China 361022
infochina@microdyn-nadir.com

Singapore Office
MICRODYN-NADIR Singapore Pte. Ltd.
18 Tuas Avenue 8
639233 Singapore
info@microdyn-nadir.com